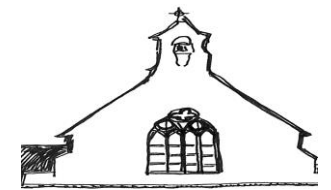


# Parish of Killavullen & Annakisha

## Seventeenth Week of Ordinary Time (July 28 – August 3)

19.28



**Sixteenth Sunday: 1<sup>st</sup> Reading:** God’s justice is accompanied by mercy. **2<sup>nd</sup> Reading:** Christ raises us to new life. **Gospel:** Jesus gives his disciples the “Our Father” as the model of all prayer: it consists of short simple phrases that express our praise and petition to God. *A children’s activity sheet based on today’s Gospel is available from the Usher as you come to church.*

### Mass and other events this Week

**Saturday Vigil** Killavullen: 7.00pm

*Confessions are celebrated from 6.30pm, prior to the Vigil Mass.*

**Sunday:** Annakisha: 10.00am

Killavullen: 11.30am

**Monday to Friday** Killavullen 9.30am

*Holy Hour: Thursday at 7.30pm*

***This newsletter will be taking a break during August.*** Mass times will continue as normal unless announced otherwise. Please note that for August 15 (Feast of the Assumption) there will be a 10.00am Mass in Killavullen and 7.30pm Mass in Annakisha

**The Summer** (Petrol) collection can be returned in the envelope included with the annual family box, or by the special envelopes at church doors.

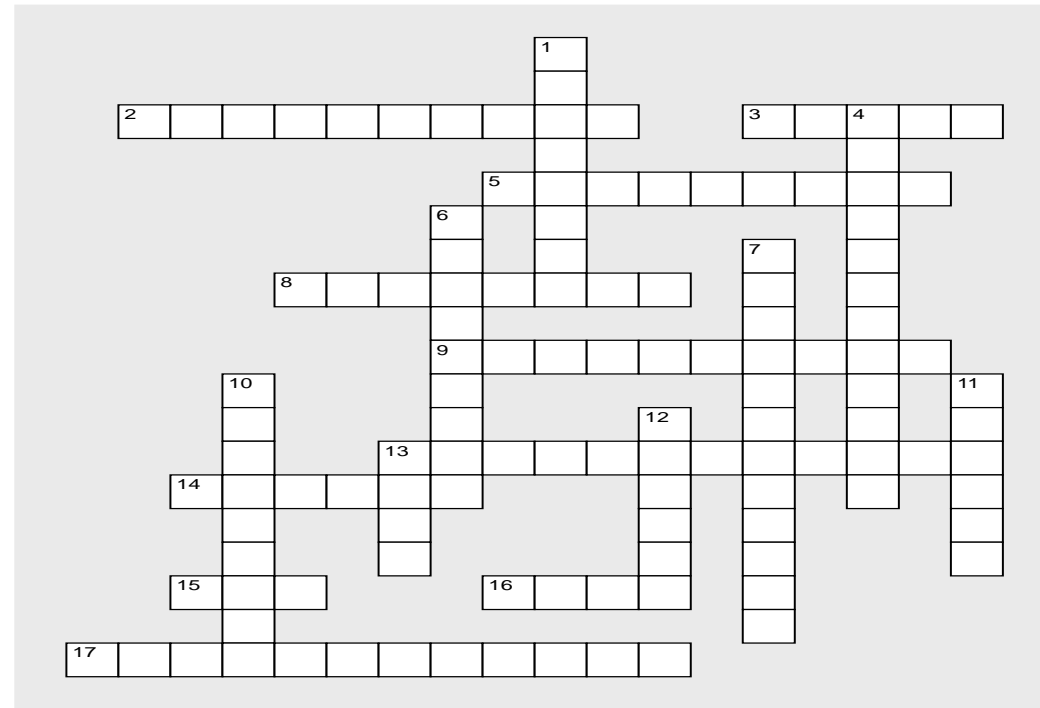
**Killavullen Parish Pilgrimage to Glenstal on August 15:** Booking forms are available at both churches, the Parish Office or from Kathleen Hanley (086-1556360) We have provided the option of travelling by coach from Killavullen and Annakisha churches, or by car. Includes, guided tour, dinner and Mass for the Feast of the Assumption with the Monastic Community. A deposit of €10 secures your place(s). For more details visit the notices section of the parish website and [www.glenstal.org](http://www.glenstal.org)

**Parish Crossword No 1.** - Complete by August 18 and return to the sacristy or the suggestions box inside church doorways. First correct crossword will receive a prize!

**Name and address:** \_\_\_\_\_

### Clues Across

- 2) Most southerly townland in parish 3) Cabinet for storing Sacred Oils  
5) The altar at Annakisha came from this town.



- 8) Family that donated original site of Killavullen NS.  
9) Name of townland at northern tip of parish.  
13) Sacrament which celebrates full membership of the Church.  
14) Townland and disused Church associated with St. Craebhnait.  
15) Anagram on the façade of parish church. To God all glory.  
16) 2019 is Liturgical Cycle C and features this Gospel.  
17) The meaning of the word “Eucharist”.
- Clues Down**
- 1) Patron saint of the parish. 4) Townland where Nano was born.  
6) Prayer to tell God and our brothers and sisters that we are sorry.  
7) The Parish Committee that looks out for children.  
10) Local institution; sixtieth anniversary occurs this year.  
11) Former name of Ross St. 12) 19th Century PP who built churches.  
13) Town with cathedral consecrated in August 1919.